

Steel ball valves, reduced bore

101/G series, male threads and plug / welding, EN (DIN), DN 15-25, reduced bore

Body	DN 15-25 Steel, P235GH (1.0345)
Ball	DN 15-25 Stainless steel, X5CrNi18-10 (1.4301)
Ball seal	DN 15-25 PTFE+C
Stem	DN 15-25 Stainless steel, X8CrNiS18-9 (1.4305)
Stem seal	DN 15-25 FPM
Operation	DN 15-25 With zinc-plated steel handle
Equipment	DN 15-25 are equipped with plug and chain

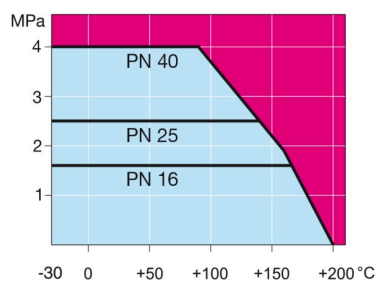


Operation conditions

-30 °C – +200 °C

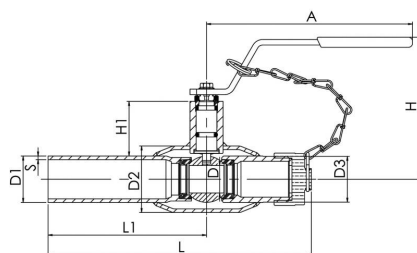
Below 0 °C contact manufacturer

Leakage rate A (EN 12266-1)



Not for steam

DN 15-25



DN	PN	Product no. Vexve	A	D	D1	D2	D3	H	H1	L	L1	S	kg
15	40	101015/G	145	10	21.3	33.7	G 1/2	100	22	167	115	2	0.5
20	40	101020/G	145	15	26.9	42.4	G 3/4	103	23	172	115	2.3	0.6
25	40	101025/G	144	20	33.7	48.3	G 1	118	34	175	115	2.6	0.9

Underground ball valves, reduced bore

231/l series, Air release valve / Short, female threads / welding EN (DIN), DN 25-50, reduced bore

Body	DN 25-50 Stainless steel, X2CrNiMo17-12-2 (1.4404)
Extension Pipe	DN 25-50 Steel, P235GH (1.0345)
Ball	DN 25-50 Stainless steel, X2CrNiMo17-12-2 (1.4404)
Ball seal	DN 25-50 PTFE+C
Stem	DN 25-50 Stainless steel, X2CrNiMo17-12-2 (1.4404)
Stem seal	DN 25-50 FPM/NBR
Plug	DN 25-50 DZR brass
Equipment	DN 25-50 are equipped with unpainted, plug

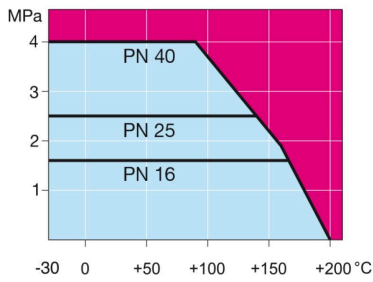


Operation conditions

-30 °C – +200 °C

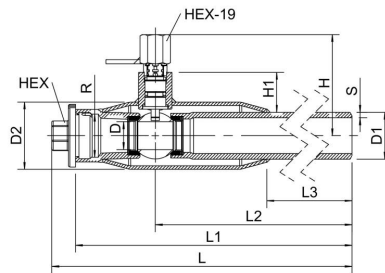
Below 0 °C contact manufacturer

Leakage rate A (EN 12266-1)



Not for steam

DN 25-50



DN	Product no. Vexve	D	D1	D2	H	H1	HEX	HEX19	L	L1	L2	L3	R	S	kg
25	231025/l	20	33.7	48.3	73	27	19	19	412	395	338	255	4	4	1.9
40	231040/l	32	48.3	70.0	85	31	27	19	416	395	319	215	4,5	4,5	2.9
50	231050/l	40	60.3	88.9	92	32	27	19	416	392	303	194	4	4	3.7

Underground ball valves, reduced bore

231/IAP/M series, Air release valve / Long, female threads / welding EN (DIN), DN 20-50, reduced bore

Body	DN 20-50 Stainless steel, X2CrNiMo17-12-2 (1.4404)
Extension Pipe	DN 20-50 Steel, P235GH (1.0345)
Ball	DN 20-50 Stainless steel, X2CrNiMo17-12-2 (1.4404)
Ball seal	DN 20-50 PTFE+C
Stem	DN 20-50 Stainless steel, X2CrNiMo17-12-2 (1.4404)
Stem seal	DN 20-50 FPM/NBR
Plug	DN 20-50 DZR brass
Equipment	DN 20-50 are equipped with unpainted, plug

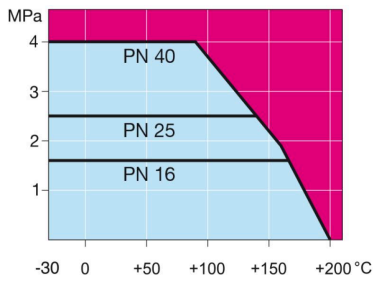


Operation conditions

-30 °C – +200 °C

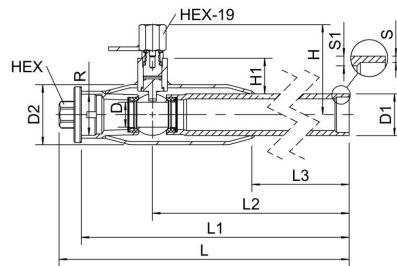
Below 0 °C contact manufacturer

Leakage rate A (EN 12266-1)



Not for steam

DN 20-50

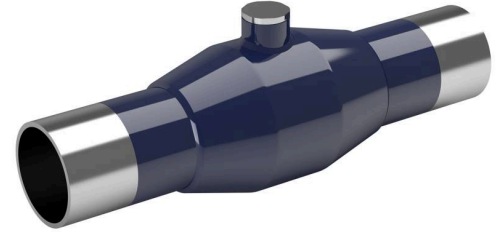


DN	Product no. Vexve	D	D1	D2	H	H1	HEX	HEX19	L	L1	L2	L3	R	S	S1	kg
20	231020/IAP/M	15	26.9	42.4	63	21	19	19	500	484	434	351		2,6	4	1.5
25	231025/IAP/M	20	33.7	48.3	73	27	19	19	500	482	425	342		2,6	4	1.9
32	231032/IAP/M	25	42.4	60.3	76	25	19	19	500	479	414	305		3,2	4,5	2.8
40	231040/IAP/M	32	48.3	70.0	84	31	27	19	500	479	403	299		3,7	4,5	3.3
50	231050/IAP/M	40	60.3	88.9	93	32	27	19	500	476	386	278		2,9	4	4.0

Branching valves, reduced bore

120 series, Branching valve, welding / welding, EN (DIN), DN 20-200, reduced bore

Body	DN 20-200 Steel, P235GH (1.0345)
Ball	DN 20-200 Stainless steel, X5CrNi18-10 (1.4301)
Ball seal	DN 20-200 PTFE+C
Stem	DN 20-200 Stainless steel, X8CrNiS18-9 (1.4305)
Stem seal	DN 20-200 FPM
Operation	DN 20-200 with socket wrench

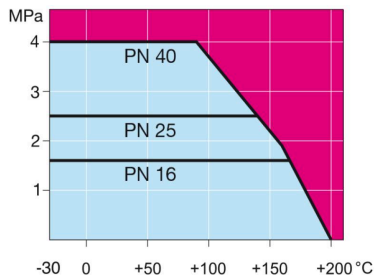


Operation conditions

-30 °C – +200 °C

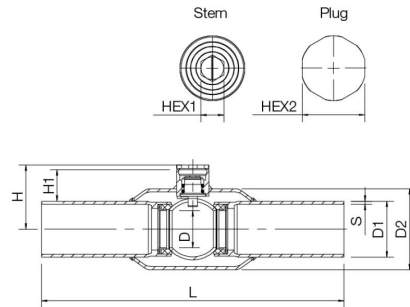
Below 0 °C contact manufacturer

Leakage rate A (EN 12266-1)



Not for steam

DN 20-200

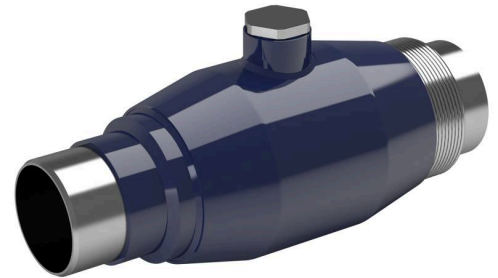


DN	PN	Product no. Vexve	D	D1	D2	H	H1	HEX1	HEX2	L	S	kg
20	40	120020	15	26.9	42.4	36	18		19	230	2,3	0.8
25	40	120025	20	33.7	48.3	42	21	9	22	230	2,6	1.1
32	40	120032	25	42.4	60.3	46	20	9	22	260	2,6	1.3
40	40	120040	32	48.3	70.0	55	27	10	27	260	2,6	1.5
50	40	120050	40	60.3	88.9	63	29	10	27	300	2,9	2.4
65	25	120065	50	76.1	101.6	74	30	15	32	300	2,9	3.3
80	25	120080	65	88.9	121.0	87	36	15	32	300	3,2	4.6
100	25	120100	80	114.3	146.0	104	46	15	36	325	3,6	7.2
125	25	120125	100	139.7	177.8	123	47	19	41	325	4	12.1
150	25	120150	125	168.3	219.1	143	53	19	41	350	4,5	16.6
200	25	120200	150	219.1	273.0	173	58	32	70	390	4,5	31.0

Branching valves, full bore

126 series, Hot tapping valve, welding / welding, EN (DIN), DN 20-150, full bore

Body	DN 20-150 Steel, P235GH (1.0345)
Ball	DN 20-150 Stainless steel, X5CrNi18-10 (1.4301)
Ball seal	DN 20-150 PTFE+C
Stem	DN 20-150 Stainless steel, X8CrNiS18-9 (1.4305)
Stem seal	DN 20-150 FPM
Operation	DN 20-150 with socket wrench

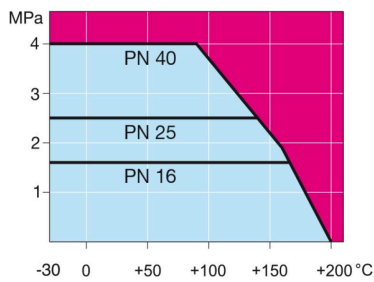


Operation conditions

-30 °C – +200 °C

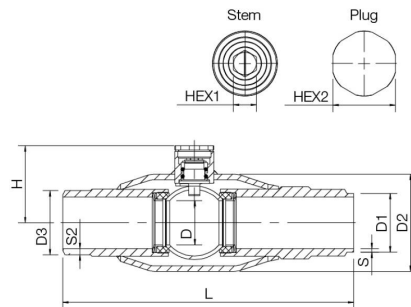
Below 0 °C contact manufacturer

Leakage rate A (EN 12266-1)

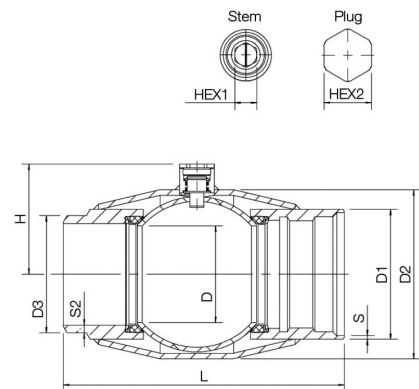


Not for steam

DN 20-125



DN 150



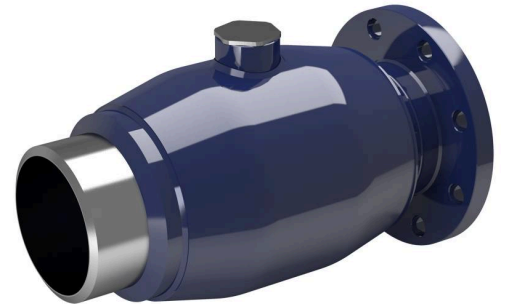
DN	PN	Product no. Vexve	D	D1	D2	D3	H	HEX1	HEX2	L	S	S2	kg
20	40	126020	20	26.9	48.3	33.7	42	9	22	170	2.3	5.8	1.1
25	40	126025	25	33.7	60.3	36.5	46	9	22	209	2.6	4.3	1.5
32	40	126032	32	42.2	70.0	46.2	55	10	27	209	2.6	4.5	2.0
40	40	126040	40	48.3	88.9	52.1	63	10	27	228	2.6	4.5	2.7
50	40	126050	50	60.3	101.6	64.5	74	15	32	260	2.6	5	4.5
65	25	126065	65	76.1	121.0	80.3	88	15	32	280	2.9	5	5.5
80	25	126080	80	88.9	146.0	94.5	102	15	36	312	3.2	6	10.1
100	25	126100	100	114.0	177.8	122.1	123	19	41	349	3.5	7.5	18.0
125	25	126125	125	139.7	219.1	151.7	143	19	41	363	5.6	10	29.9
150	25	126150	125	168.3	219.1	151.7	143	19	41	365	4,5	10,4	29.9

*DN 150 reduced bore

Branching valves, full bore

126xx1 series, Hot tapping valve, flange / welding, EN (DIN), DN 150-200, full bore

Body	DN 150-200 Steel, P235GH (1.0345)
Ball	DN 150-200 Stainless steel, X5CrNi18-10 (1.4301)
Ball seal	DN 150-200 PTFE+C
Stem	DN 150-200 Stainless steel, X8CrNiS18-9 (1.4305)
Stem seal	DN 150-200 FPM
Operation	DN 150-200 with socket wrench

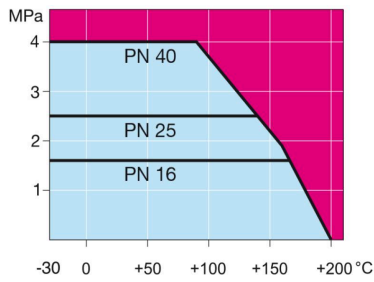


Operation conditions

-30 °C – +200 °C

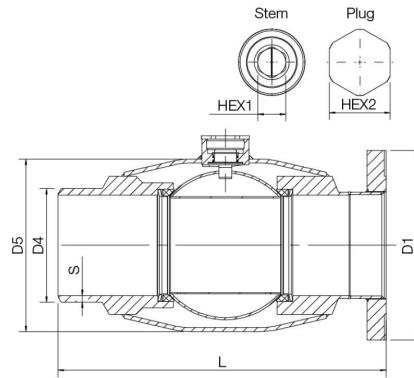
Below 0 °C contact manufacturer

Leakage rate A (EN 12266-1)



Not for steam

DN 150-200



DN	PN	Product no. Vexve	D	D1	D2	D3	D4	D5	H	HEX1	HEX2	L	S	kg
150	25	126151	150	300.0	250.0	26.0	180.0	273.0	174	32	70	520	10,4	57.5
200	25	126201	150	360.0	310.0	26.0	180.0	273.0	173	32	70	523	10.4	57.0

*DN 200 reduced bore

District energy plastic chamber

District energy plastic chamber is designed to be the optimal companion with manual and hydraulic valve operating systems of direct-buried valves. The chamber can be used as an easy alternative to concrete valve chambers – instead of laying of concrete the polyethylene chamber can be simply placed on top of exposed actuators and landfill can be done immediately after. The chamber is equipped with a telescopic mechanism for adjustable depth and it can support itself without concrete supports.

Materials

Bodypipe / manhole:	Polyethylene
Lid cover:	Cast iron, 40 tons (EN124)

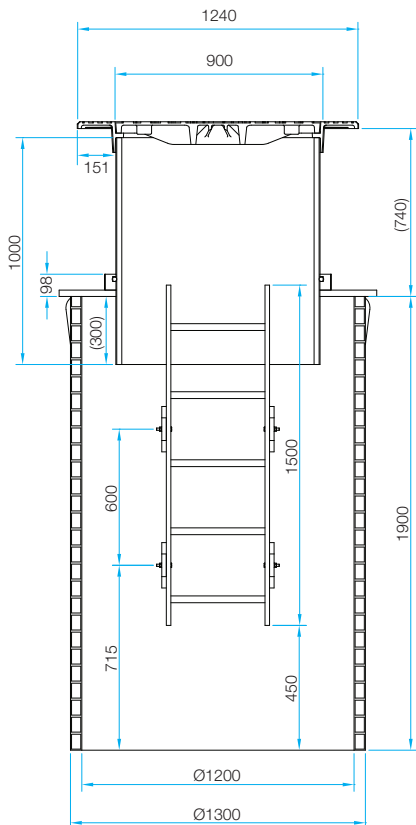
Properties

Manhole ring stiffness:	SN1 (ISO 9969)
Chamber ring stiffness:	SN2 (ISO 9969)
Weight:	450 kg (default height)
Adjustable height	Bodypipe can be cut to desired length on-site

Plastic chamber is delivered with aluminium ladders

Options

Available with different length chambers up to 10 meters. Ring stiffness classification (SN2/SN4/SN8) depending on the required length.



Model

District energy plastic chamber Ø1200/900 3 m

Product no.

899 000